



DUAL THREAD

Fixed Mount Aerator

Removable Threads

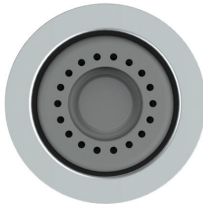
Available In **UHET™** WATER-SAVING KITS



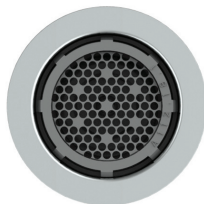
FEATURES

- Aerator body is constructed of ABS poly and completely lead free for safe drinking water
- Modern design & stylish flared body
- Patented flow compensating technology guarantees a consistent flow rate across a wide range of pressure
- Dual-thread connection

Needle Spray



Bubble Spray



SPECIFICATIONS

ITEM NUMBER	FLOW RATE	FINISH	SPRAY
N3601N*	1	Chrome	Needle
N3601B	1	Chrome	Bubble
N3602N*	1.5	Chrome	Needle
N3602B	1.5	Chrome	Bubble

Technology Pressure-Compensating
ASME Certification A112.18.1
CSA Certification B125.1

** Not WaterSense Certified*



Bubble Spray



NIAGARA
CONSERVATION®

*LIMITED LIFETIME WARRANTY on vitreous china products. Toilet tank trim: fill valve and flush valve assembly and plumbing fittings are warranted for a period of ten years to the purchaser from the date of purchase. Call Niagara Conservation for complete warranty details.

CORPORATE HQ 1200 Lakeside Parkway, Suite 450, Flower Mound, Texas 75028 USA
(t) 800.831.8383 (p) 817.391.0800 (f) 682.200.6962 (e) info@niagaracorp.com

© 2016 Niagara Conservation

niagaracorp.com

DUAL THREAD FIXED MOUNT AERATOR

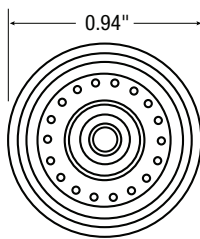
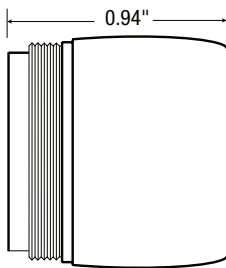
Removable Threads



MEASUREMENTS

Length: 0.94"

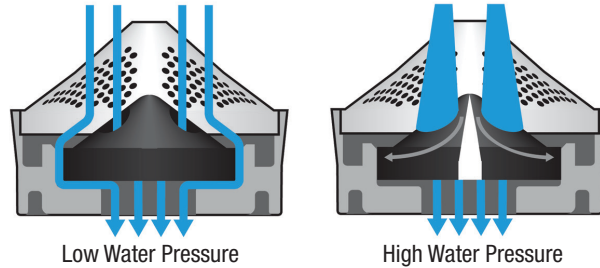
Diameter: 0.94"



NOTE: Dimensions are subject to change.

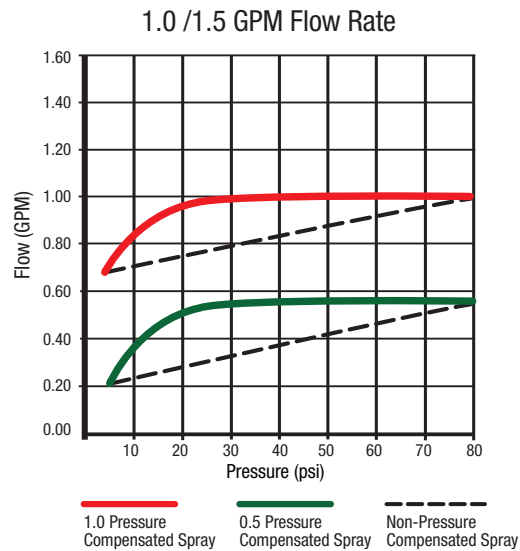
EQUIFORCE® TECHNOLOGY

Constant Output Regardless of Pressure



At low pressure, water is allowed to flow through three holes in the center of the compensator around the scallop cutouts on the edges. As water pressure increases, the force presses down on the compensator, causing it to flex. As it flexes, the scalloped cuts seal off, allowing water to only flow through the center holes. As water pressure increases further, the compensator continues to flex and the shape of the holes distort, reducing the size of the openings. This further controls the amount of water that flows through them. The shape and hardness of the rubber help maintain a level flow rate as the pressure increases.

Constant Flow Rate Across Wide Range of Pressure



WARRANTIES

Warranty for Niagara showerheads and aerators obtained through wholesale, municipalities, utilities or other commercial channels:

10-year Limited Warranty to the purchaser from the date of purchase. Niagara will replace any part that, in our opinion, has proved defective; provided the product has not been abused, misused, altered, or damaged after its purchase. For complete warranty details, contact Niagara Conservation at 800.831.0800.